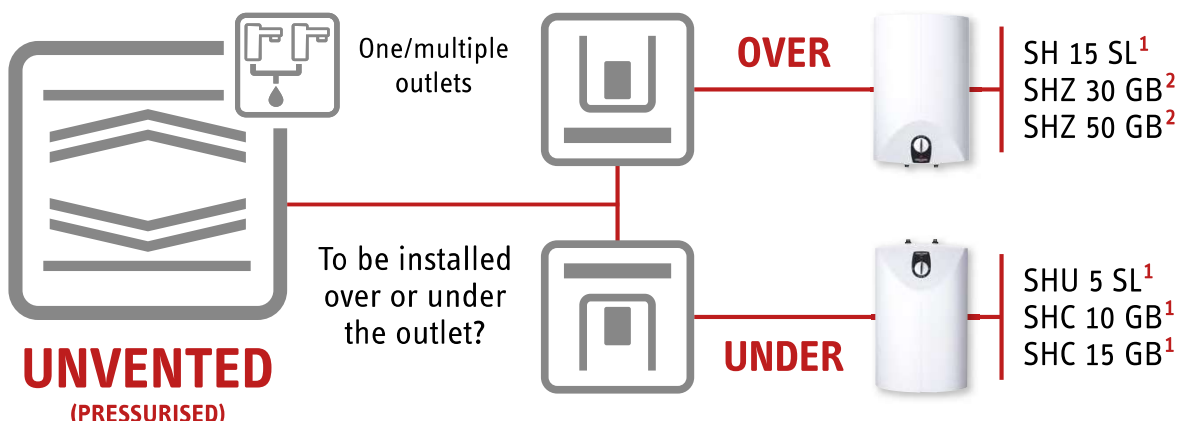
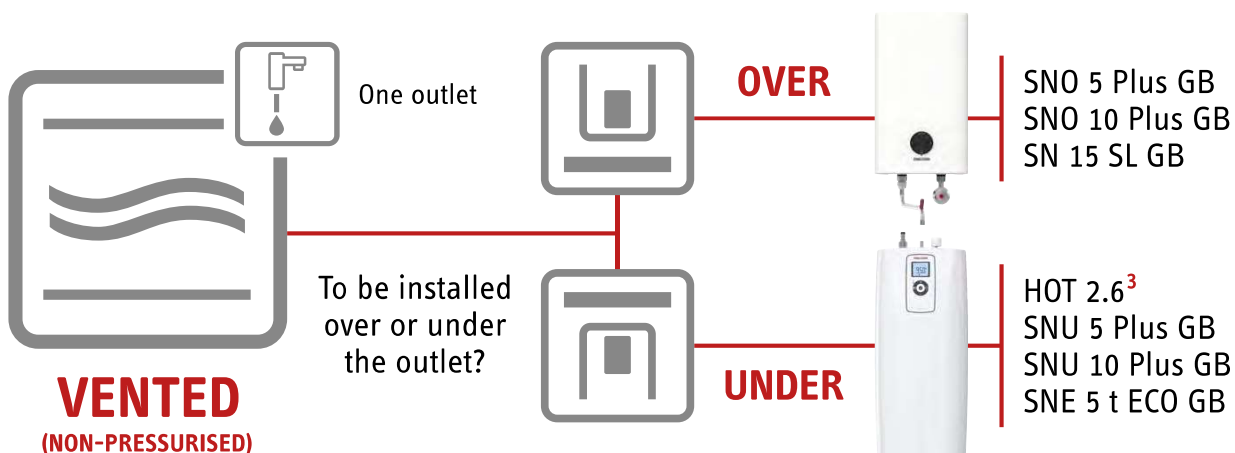


Which small water heater?

Choose unvented units for multiple outlets. Vented units must be used with special taps and are suitable for one outlet. Note: All our 5-15 litre unvented units are supplied with a pressure relief valve - see next diagram to determine if you need an additional pressure kit¹ (supplied as standard to 30 & 50 litre models²).



¹An additional unvented kit is needed if you do not have more than 2.0 m for the 5 litre, 2.8 m for the 10 litre, 4.2 m for the 15 litre 15mm pipe length between heater and outlet. Unvented kit - 236701 for the 5 & 10 litre models & 236702 for the 15 litre model.



- › Choose 5 litre models for a basin. The t ECO model features an onboard controller/timer.
- › Choose 10 litre models or the SNE 5 t ECO for 2 basins or a kitchen sink (this model can store water at higher temperatures than other 5 litre models for greater mixed volume).
- › Choose 15 litres for high usage sinks or up to 3 basins.
- › Choose 30 litres plus for cleaners' sinks, light commercial.²

²See our cylinders brochure for details of SHZ products.

³Supply of 95 degree water - warm water via 3in1 tap requires supply plumbed from another source.